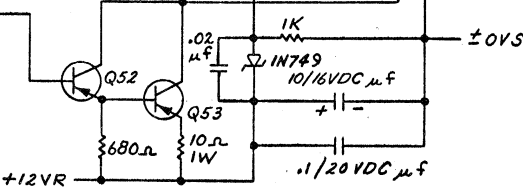
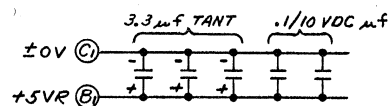


I.C. LOCATION	TYPE	W.L. NO.	TERM FOR VCC +5V	TERM FOR ±0V	QTY.
L1, 2, 3, 4, 5, 6, 7, 8, 9, 10, 11, 12, 13, 14, 15, 16, 17, 18, 19, 20, 21, 22, 23, 24, 25, 26	MC844P OR F9944	376-0024	14	7	24
L27	SN7400N	376-0002	14	7	1
L19, 20	SN7451N	376-0012	14	7	2

TRANSISTORS	TYPE	W.L. NO.	QTY.
Q1 THRU Q24, Q26, Q28 THRU Q52	GT544	375-1017	50
Q25	2N3640	375-1003	1
Q27, 53	2N4037	375-1018 OR 375-1020	2

NO.	REVISION	DATE	BY
1	REVISED PER E.C. 1833	11/19/65	W.S.
2	REVISED PER E.C. 2355	10/10/66	W.S.



IDENT	QTY	NAME	MATERIAL	DESCRIPTION
TOL. EX. AS NOTED .XX ±.010 ANO. ±0.30 .XXX ±.008 FRAC. ±1/64 FINISH: ✓				
WANG LABORATORIES, INC. TEWKSBURY, MASS. U. S. A.				
MODEL No.	W.O. No.	SCALE	SHEET OF	
TITLE SCHEMATIC LOGIBLOC *5917 (WITH P.C. 6085) X & Y CORE DRIVER				
PART NUMBER	2 D	REV SIZE	DRAWING NUMBER	
			5917-1	

D 5917-1